



**JIM & STEPHEN  
GAMMER**  
COMMERCIAL & INDUSTRIAL REAL ESTATE



# For Lease

## 102-5830 176A Street, Cloverdale



### Features:

Ground floor, 1,558 SF former real estate office with multiple offices. H-Vac and recent updating.

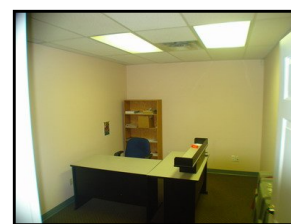
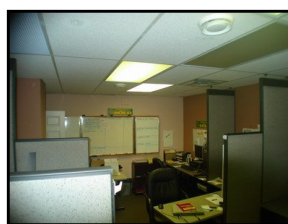
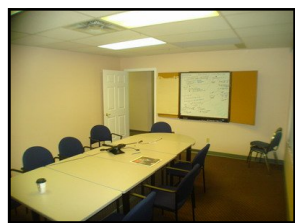
### Lease Terms:

Size	Basic Rent	Add'l Rent	Monthly
1,558	\$12.50	\$4.37	\$2,190.29

Availability: Immediately

Zoning: C-15

\*\*For more information please visit [www.gammer.ca](http://www.gammer.ca)



**JIM GAMMER**  
© 604-644-1913



**STEPHEN GAMMER**  
© 604-781-5353



*E & O: Although this information has been received from sources deemed to be reliable, we assume no responsibility for its accuracy, and Without offering advice, make this submission to prior lease or sale, change in price or terms and withdrawal without notice.*