

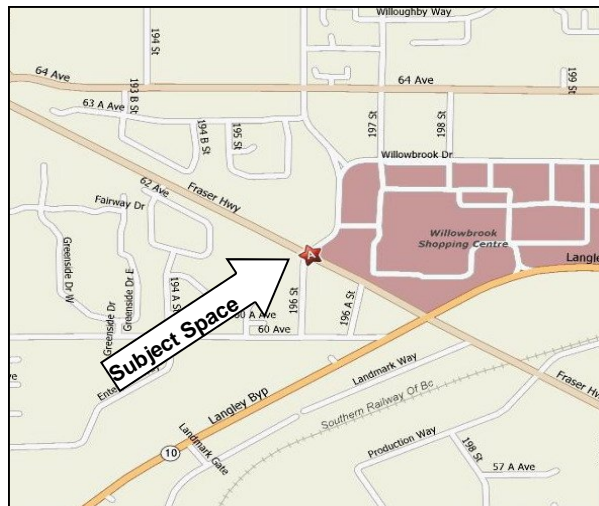


**JIM & STEPHEN
GAMMER**
COMMERCIAL & INDUSTRIAL REAL ESTATE



For Lease

19602 Fraser Highway, Langley



Features:

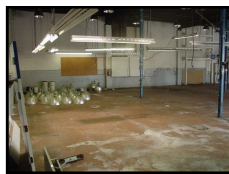
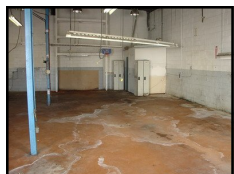
Rare find: Large 3,705 SF former automotive shop in ready condition for car or truck repair, or recreation vehicles or your commercial/ industrial use. Bring your ideas. High retail exposure along 196 Ave on the Langley Surrey border at Fraser Hwy.

Lease Terms:

Size	Basic Rent	Add'l Rent	Monthly
3,705	\$10.50	\$5.12	\$4,822.68

Zoning: C-2

Lot Size: 6,000 SF



*** For more information please visit www.gammer.ca**



JIM GAMMER
© 604-644-1913



STEPHEN GAMMER
© 604-781-5353

