

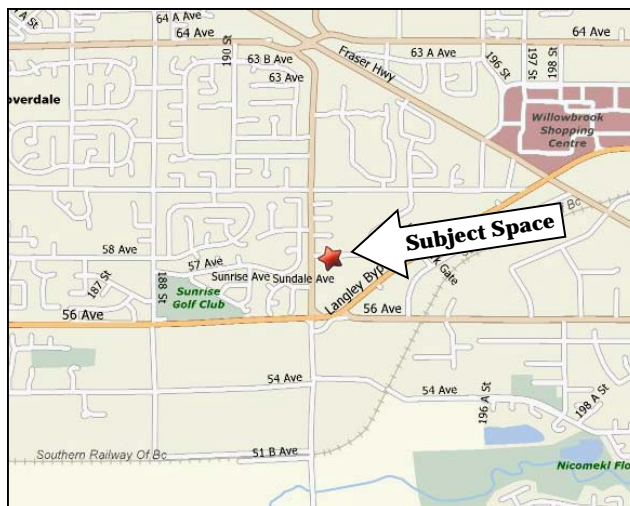


**JIM & STEPHEN  
GAMMER**  
COMMERCIAL & INDUSTRIAL REAL ESTATE



# FOR SALE - \$333,000

## 18-19257 Enterprise Way, Surrey



### Features:

Features include: 18' ceiling height, rear grade loading bay door 10' x 14', 200 amp service, 412 SF showroom/office in the front, and 412 SF unfinished mezzanine. Concrete block construction, washroom and gas heating.

**Location:** Near # 10 Hwy & 192 St

**Availability:** Immediate

### Population:

	1996	2001	2004	2006	2011
<b>Surrey</b>	304,000	347,800	378,000	400,000	450,000
<b>Cloverdale</b>	26,800	30,900	35,000	42,000	56,000

### Subject Property:

Perfect for a small business to get started and build equity instead of paying rent.

**Main Floor:** 2,007 SF

**Mezzanine:** 412 SF

**Zoning:** IL (Light Industrial)

**Built:** 1995

For more information please visit [www.gammer.ca](http://www.gammer.ca)



JIM GAMMER  
© 604-644-1913



STEPHEN GAMMER  
© 604-781-5353



*E & O: Although this information has been received from sources deemed to be reliable, we assume no responsibility for its accuracy, and Without offering advice, make this submission to prior lease or sale, change in price or terms and withdrawal without notice.*