

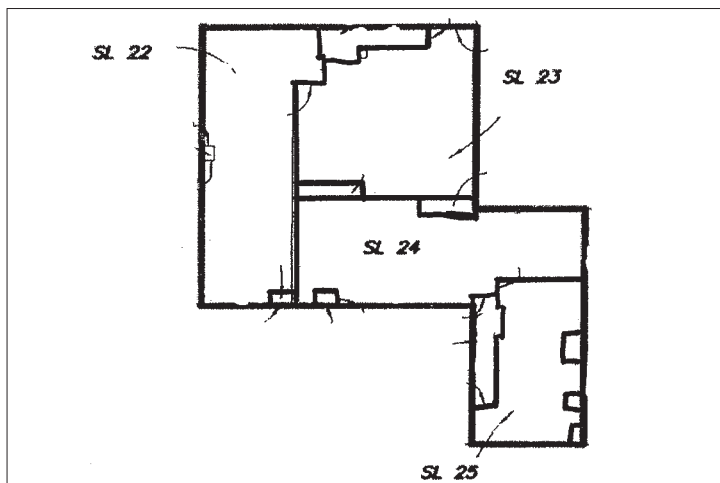


JIM & STEPHEN GAMMER

COMMERCIAL & INDUSTRIAL REAL ESTATE



Strata Offices For Sale 9547 - 152nd Street



Features:

Rare strata office for sale in Guildford. Refurbished second floor walk-up office with in-suite washroom and HVAC. Perfect for a small business wanting to build equity instead of just paying rent.

Zoning: C-8

Availability: 60 Days

Strata Lot	Size SF	Px/SF	Price	Est. Tax & Strata
22	1022.57	\$130.00	\$ 132,934	\$273.28
23	1002.12	\$145.00	\$ 145,307	\$271.06
24	1048.41	\$145.00	\$ 152,019	\$276.08
25	537.91	\$145.00	\$ 77,997	\$141.61

Population:

	1981	1991	1996	2001	2005	2011	2021
Surrey Total	147,000	245,200	304,000	347,800	388,000	453,000	542,000
Guildford	18,000	33,000	44,100	49,300	53,000	56,000	65,000

**for more information please visit our website: www.gammer.ca*



JIM GAMMER
 ☎ 604-644-1913
jim@gammer.ca



STEPHEN GAMMER
 ☎ 604-781-5353
stephen@gammer.ca



Although this information has been received from sources deemed to be reliable, we assume no responsibility for its accuracy, and without offering advice, make this submission subject to prior lease or sale, change in price or terms and withdrawal without notice.